

SELENE 60

CLASSIC OCEAN PILOTHOUSE YACHT



WORLD READY « THE CIRCUMNAVIGATOR »

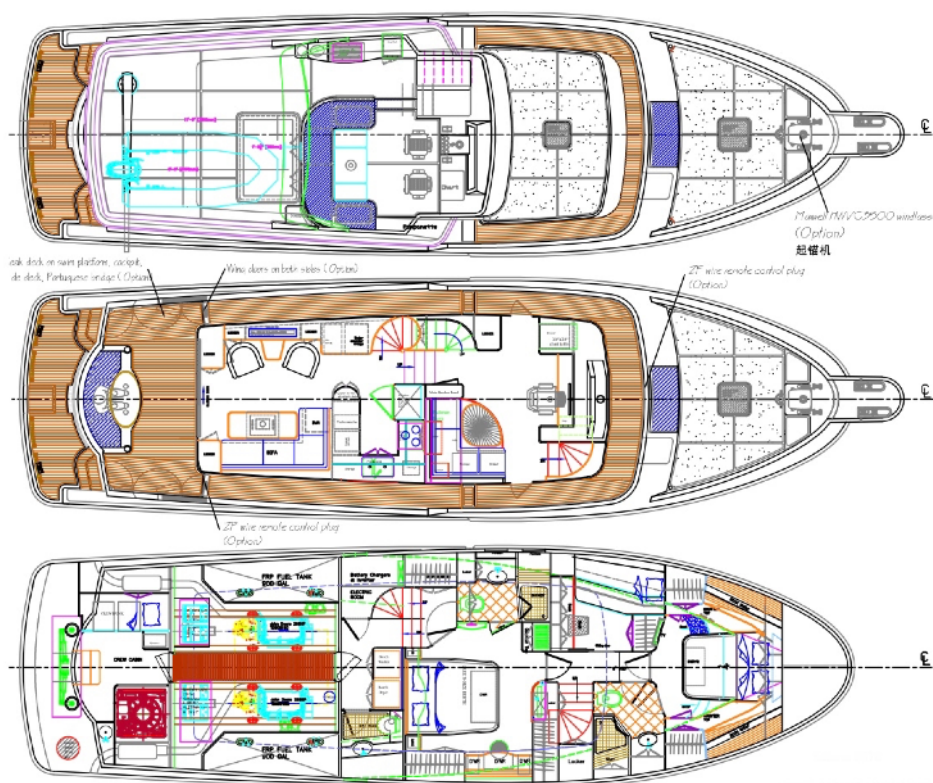
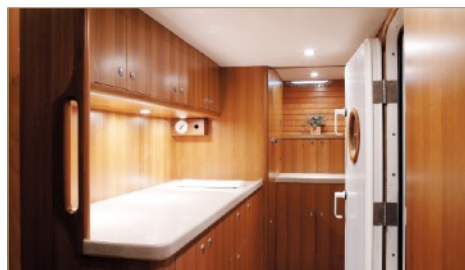
The Selene 60 is a new design from an entirely new mold with the Deep Hull™, resulting in a raised sheer and a higher deck which increases headroom in the cabins and the engine room. The Selene 60 is a perfect transitional yacht between the successful Selene 53/54 and Selene 62/66 series. She features a full-height engine room, a separate crew's quarters aft with a transom door. An expansive and functional flybridge layout incorporates a 10-person U-shaped sofa with a built-in BBQ, sink and refrigerator. One of the unique selling points of the Selene 60 is its full-height utility room, that is placed between the master suite and the engine room for storage, freezer, washer/dryer and access to the electrical compartment. This space also provides even better isolation of the engine room noise into the master suite! Behind the walk through engine room you find the lazarette, which is so spacious that you can easily store your tools, spare parts and diving equipment or build a crew-cabin with head. The settee molded into the cockpit creates a gracious space for relaxation under way or at the dock. The European transom with inset swim platform puts the Selene 60 into the mini mega-yacht class. An optional FRP hardtop enhances both the functionality and profile of this graceful yacht. The quality and beauty of the Selene 60 have been confirmed by many owners of Selene yachts who have described this boat as « the best designed and most accomplished yacht from Howard Chen's drawing board! » Built to Lloyd's Category A standards, the Selene 60 has the range, strength, and stability to cross oceans, yet with a moderate draft it is also at home in shallow tropical waters or for gunk-holing rivers and creeks. First deliveries of the Selene 60's started in the fall of 2006 and since then, over thirty Selene 60 have been delivered...

LOA: 65'-1" (19,84m)	FUEL: 2,000 USG (7 570L)
BEAM: 17'-10" (5,44m)	WATER: 600 USG (2 271L)
DRAFT: 6'4" (1,93m)	INTERIOR: 2/3 cabins, 2 heads + crew
DISPLACEMENT: 123,000 Lbs (55,8t)	SPEED: 9 kts



For more information: info@seleneoceanoyachts.com
www.seleneoceanoyachts.com





« If perfection can ever be attained, we are definitely very close to it with this exceptional yacht. I have spent 14 days on the beautiful « Koon Woon II », with her owner Dr. K. H. Lee and his crew, sailing from Hong Kong to the south-east tip of Taiwan, Green Island and the East Coast of Taiwan, then back to Hong Kong; a 1,200 nautical miles journey! It was the first passage of a motor-yacht from Hong Kong to Taiwan and a highlight of my professional career! The Selene 60 has everything one can dream of. Never has the expression "a home from home be so true!" With three staterooms, a gourmet galley and even a crew cabin for two with utility room, this boat is ready for a circumnavigation, the high latitudes or a happy family weekend in the bay. We, the Selene people, are extremely proud of our Selene 60 Ocean yacht! »

Howard Chen, 2107

SELENE 60 "THE CIRCUMNAVIGATOR"