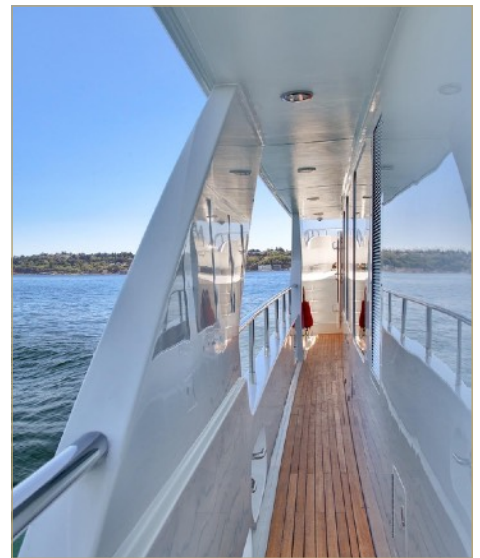


SELENE 92 EXPEDITION YACHT



« TOP TEN LONG RANGE CRUISER » BY SOUTHERN BOATING

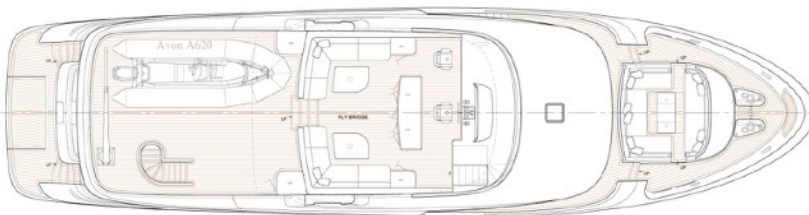
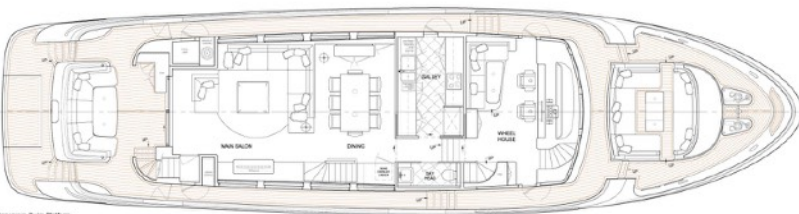
The Selene 92 Expedition Yacht is the result of an international collaboration of designers and architects under Howard Chen's design team leadership. Working closely with renowned Dutch architect Guido de Groot and a group of international consultants a contemporary long range yacht was built which capitalizes on builder Jet Tern Marine's quality construction and reputation for experience and innovation. A first look at the 92 shows a number of the Selene family traits with her powerful raised pilothouse, Portuguese bridge, and bulbous bow. A contemporary twist is also apparent with the addition of the large side windows in the hull and the stainless anchor pockets. She is sure to appeal to existing Selene owners and big boat enthusiasts alike and takes the simple and proven concept of a fuel efficient and seaworthy long-range yacht to a new level of luxury that is intended to compete directly with the finest European shipyards, but with all of the advantages of FRP. Equipped with twin 475HP engines from MTU's 60 series, the Selene 92 carries more than 6,000 gallons (23000 liters) of fuel giving enough range to reach the Marquesas from the West coast of the United States. What is catching eyes is the unusual combination of modern styling and the capabilities of an ocean cruiser. The Selene 92 Expedition Yacht has four staterooms, three guest cabins and a full-beam owner's cabin, a laundry room and a crew's quarters with two cabins and a mess area. In November 2017, the Selene 92 was listed by *Southern Boating* as one of the « Top Ten Long Range Cruisers ».

| | |
|---------------------------------|-------------------------------------|
| LOA: 91'-11" (27.93m) | FUEL: 23 000 L |
| BEAM: 23'-9" (7.23m) | WATER: 800 USG |
| DRAFT: 7'-6" (2.29m) | INTERIOR: 4 cabins, + 2 crew cabins |
| DISPLACEMENT: 374,200lbs (158t) | SPEED: 10 kts |



For more information: info@seleneoceanyachts.com
www.seleneoceanyachts.com





Expedition Yachts

« The features and qualities that set an expedition yacht apart from a long-range or blue-water yacht are many. . . Is it designed and built to handle extreme weather conditions with a sea-kindly hull form? Is the safety and comfort of the passengers and crew a priority? Does it have a sufficient fuel volume to travel 3,000 nautical miles at 10 knots? With the Selene 92 Expedition, the answer is yes to all these questions! »

Howard Chen, 2017



SELENE 92 EXPEDITION YACHT