

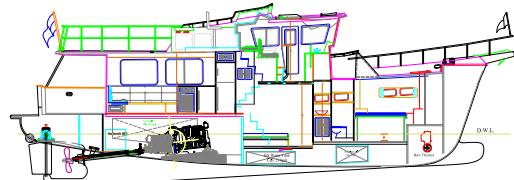
SELENE 49 EXPLORER YACHT



THE FLAGSHIP OF THE « SMALL SELENES »

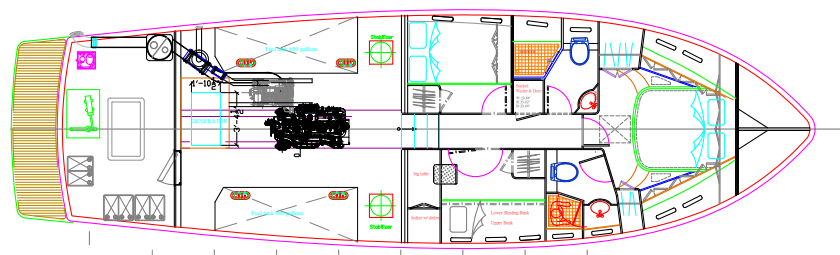
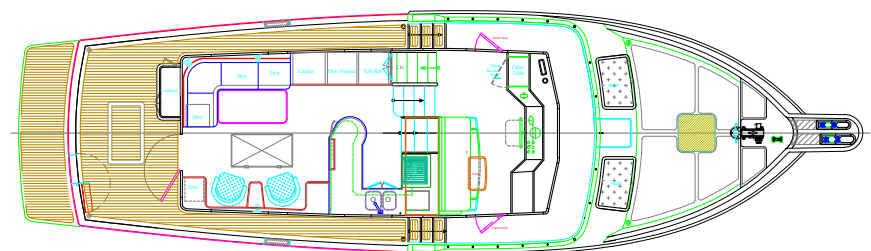
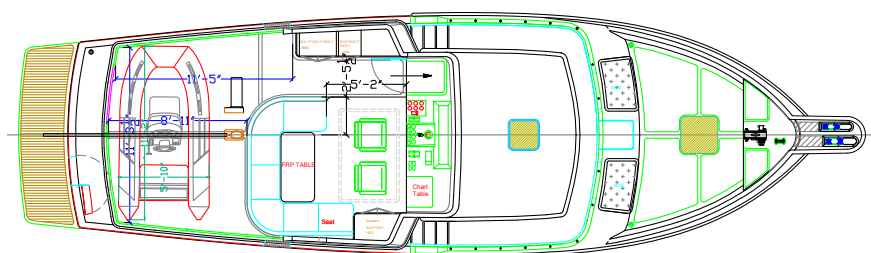
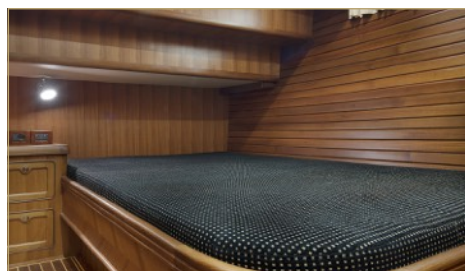
The Selene 49 is an evolution of the Selene 47. It features the Deep-Hull™ & Cruiser Stern™ which improves headroom in the engine room and lazarette and makes the hull more efficient than its predecessor. The Selene 49 has a traditional « salty » look from the outside. Another significant difference is a wider flybridge giving space for entertaining friends and family in style in the open air, with ample room on the aft deck for a dinghy and hydraulic crane. The flybridge layout with a canvas cover or a hard-top includes an L-shaped settee and table and a bar with sink and BBQ. The hull itself is deeper than the Selene 47 and is meant to carve through the water. The longer LOA of the Selene 49 translates to an 8" increase in the cockpit and 4" more in the salon. The living space is large and spacious. The salon is luxuriously finished in teak. Past the L-shaped dinette to port, the U-shaped galley forward has granite countertops and modern appliances, including a full-size refrigerator and freezer. The two or three-stateroom accommodations are spacious, due to the full hull sections forward. The owner's cabin has a queen-size island berth with teak and holly steps on both sides, plus two cedar-lined hanging lockers. Headroom for the engine room has increased by a foot and the Cummins QSL 9.0 330 HP engine is standard. The Selene 49 is an excellent long range cruising boat with a D/L ratio at full load of 316, and A/B ratio at full load of 2.54. At 1,800 rpm, the Selene 49 has a cruising speed of 8.5 knots for a range of 2,000 nautical miles. The 49 also boasts an integral swim platform with a swim ladder, and beneath the 18" Cruiser Stern™ there is extra room in the lazarette for gear and supplies, and at the same time greater buoyancy to offset the weight of the larger flybridge. As the flagship of the smaller Selenes, the S49 provides a level of luxury normally only found on its larger sisters, but all in an affordable yacht that's easy to handle as a couple.

LOA: 53'-11" (16,43m)	FUEL: 1,300 USG (4 900 L)
BEAM: 15'-8" (4,78m)	WATER: 230 USG (757 L)
DRAFT: 5'-4" (1,63m)	INTERIOR: 2/3 cabins, 2 heads
DISPLACEMENT: 67,840 lbs. (30,2 t)	SPEED: 10,9 kts



For more information: info@seleneoceanyachts.com
www.seleneoceanyachts.com





«The deep, rounded forefoot and sharp entry cut the chop cleanly and kept the yacht steering straight, while the flared bow provides enough volume and freeboard to keep the foredeck dry. A substantial Portuguese bridge, covered side and aft decks and high bulwarks along the sides that wrap around the aft cockpit are the features you'd want to keep your crew safe in a seaway. Strong and beautiful, this yacht will go the distance...

The Selene 49 is a yacht for two, with space for six! As the flagship of the smaller ocean trawlers, she boasts a level of luxury normally only found on her larger sisters in the range, but all in an affordable yacht that's easy to handle as a couple.

SELENE 49 General arrangements & construction details



A brand new Selene 49 leaving the shipyard



A large lazarette with a powerful steering ram



Two helm seats on the flybridge



Access to the flybridge from the pilothouse



A sky lounge & watch berth in the pilothouse



Open plan galley and bar in the salon



Two barrel chairs to starboard with reading lights



Guest cabin with two bunks & ample storage

Photos may show optional items & equipment. More details can be found on the official Selene Yacht website: www.seleneoceanyachts.com

SELENE 49 General arrangements & construction details



Large flybridge with hard top or soft top & mast



Engine controls & deck shower in the cockpit



Bow pulpit, windlass, chain well & shore power



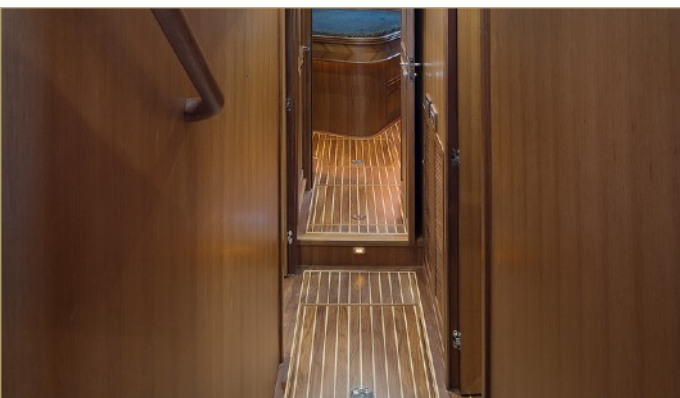
Portuguese bridge with swing door



Storage & teak deck in the cockpit



Forward cabin island bed



Teak & holly companionway floor



Salon hi-lo table & ample storage

Photos may show optional items & equipment. More details can be found on the official Selene Yacht website: www.seleneoceanyachts.com

SELENE 49 General arrangements & construction details



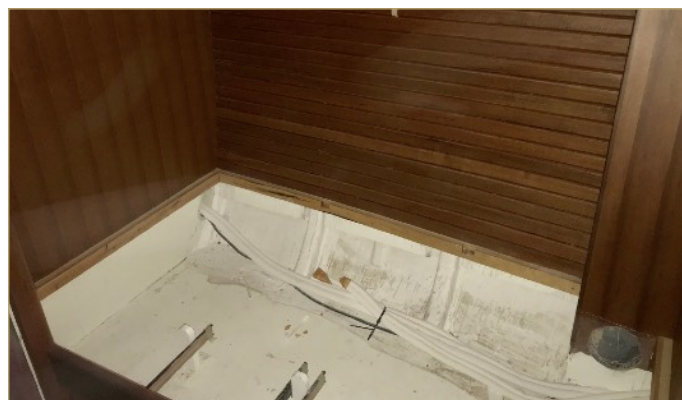
Salon under construction



Forward cabin under construction



Pilot-house under construction



Port cabin under construction



Handmade solid timber cabinetry



Foredeck stanchions installation



Teak table top with ebony inlays



Dustless paint & varnish room

Photos may show optional items & equipment. More details can be found on the official Selene Yacht website: www.seleneoceanyachts.com